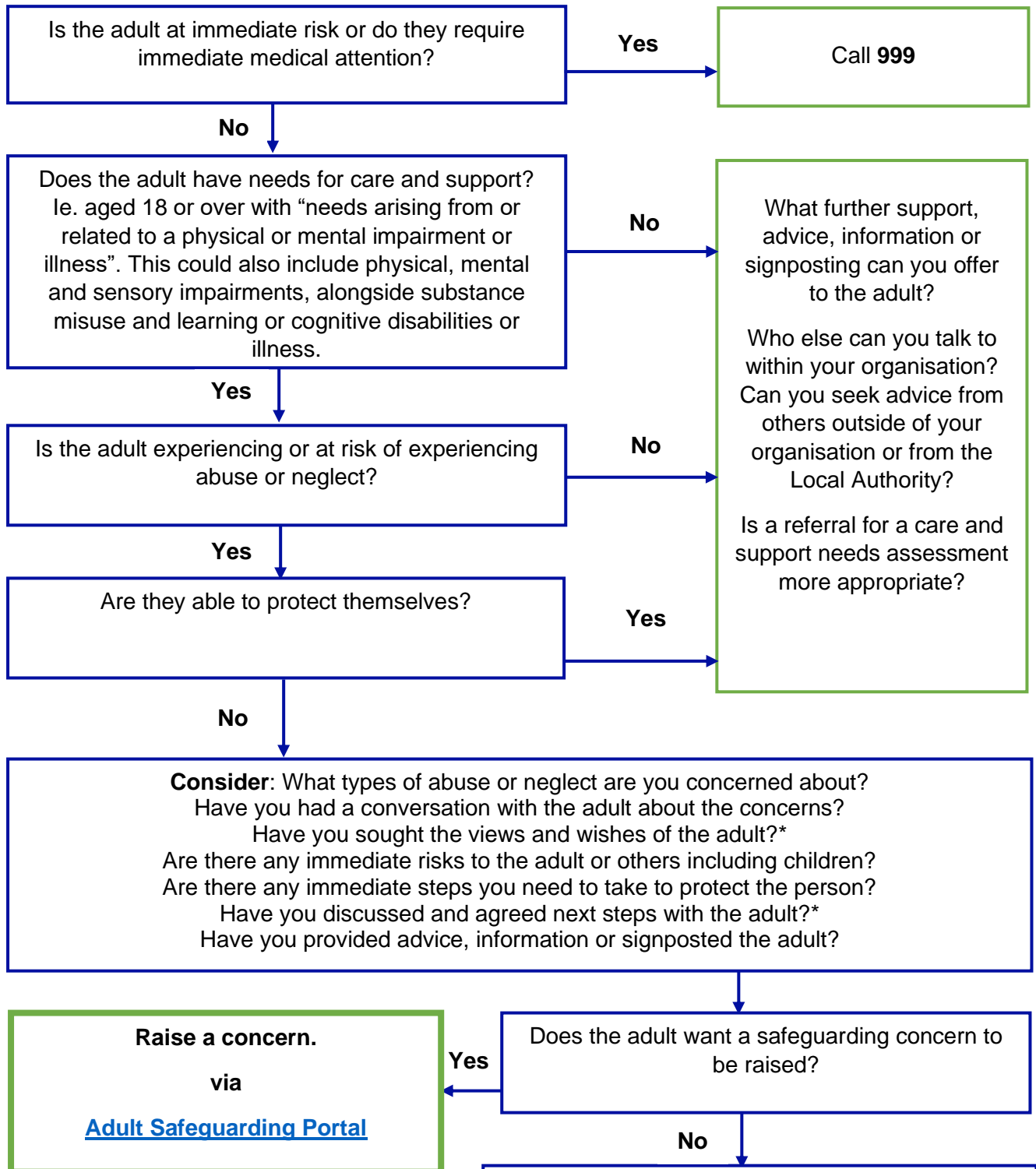


## Deciding if you need to raise a Safeguarding Concern to Adult Social Care



\*There may be circumstances where the safety of the adult or yourself prevent this from happening. If you still have concerns about abuse or neglect and it is not possible or within the scope of your role to have a conversation with the adult, then if in doubt continue with the process and raise a safeguarding concern

What further advice, support information or signposting can you offer the adult, without raising a safeguarding concern? **Consider if raising a concern may still be justified** e.g. where there is a significant risk to the person or others, were there is a public interest issue, or where a best interest decision needs to be made (where the adult lacks capacity to make the decision). Then proceed with raising a safeguarding concern. Record the rationale for your decision making